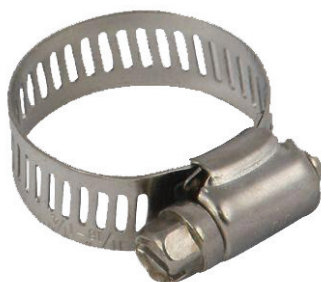


Hose / Hose Reel / Clamps



STANDARD FEATURES:

- Stainless steel with silver plated nut to prevent seizing
- 360° sealing - ideal for high torque application



STANDARD FEATURES:

- S.A.E. Stainless Steel Band housing with steel, case hardened, plated screws
- Made with all stainless steel band and screw assembly to withstand corrosion.



STANDARD FEATURES:

- These hybrid heavy duty clamps are widely used in applications in the automotive and heavy duty markets and we are now bringing them into the farm market
- 5/8" band width, all 300 stainless steel construction and 150 in/lbs ultimate torque
- Spring compression of liner creates 360 degree pressure on hose
- Liner of clamp has a trough feature which exerts additional pressure on hose and also eliminates the leak paths of a t-bolt or worm drive clamp under the housing

BANJO T-Bolt Clamps

DESCRIPTION	MIN/MAX DIA.	PART #
Clamp, T-Bolt 1 1/4"	1.62" / 1.87"	BATC162
Clamp, T-Bolt 1 1/2"	1.81" / 2.06"	BATC181
Clamp, T-Bolt 2"	2.18" / 2.50"	BATC218
Clamp, T-Bolt 2"	2.31" / 2.62"	BATC231
Clamp, T-Bolt 2"	2.50" / 2.81"	BATC250
Clamp, T-Bolt 3"	3.31" / 3.62"	BATC331
Clamp, T-Bolt 3"	3.43" / 3.75"	BATC343
Clamp, T-Bolt 4"	4.25" / 4.56"	BATC425

Greenline T Bolt Clamps

DESCRIPTION	PART #
Clamp T Bolt 1.5"	GLG89028

Stainless Steel Clamps

DESCRIPTION	MIN/MAX DIA.	PART #
S.S. clamp	3/16" - 5/16"	PP-HAS04
S.S. Clamp	5/16" - 3/8"	PP-HAS06
S.S. clamp	3/8" - 5/8"	PP-HAS08
S.S. clamp	5/8" - 1 1/4"	PP-HAS12
S.S. clamp	1 1/16" - 1 1/2"	PP-HAS16
S.S. clamp	1 3/16" - 1 1/4"	PP-HAS20
S.S. clamp	1 1/4" - 1 7/8"	PP-HAS24
S.S. clamp	1 1/2" - 2 3/8"	PP-HAS32
S.S. clamp	1 3/4" - 2 1/2"	PP-HAS36
S.S. clamp	2 9/16" - 3 1/2"	PPHAS48

Pressure Seal HD Clamps

DESCRIPTION	PART #
Pressure seal HD clamp (.08"-1.12") c/o 1" hose	PPPSWS19
Pressure seal HD clamp (1.2"-2.35") c/o 1.25" hose	PPPSWS24
Pressure seal HD clamp (1.62"-2.12") c/o 1.5" hose	PPPSHD0238
Pressure seal HD clamp (2.25"-2.75") c/o 2" hose	PPPSHD0300
Pressure seal HD clamp (3.12"-3.75") c/o 3" hose	PPPSHD0400



GLG99

Tubing and Hose Cutters

DESCRIPTION	PART #
Hose cutter	GLG99
Replacement blade	GLG99B

STANDARD FEATURES:

- Cuts hose and tubing up to 2" O.D.
- Stainless steel blade

1-866-509-0715

Pattison
Expect the Best!

www.liquidsystems.net