

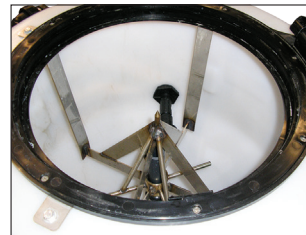
Pattison Inductors

Pattison Inductor Plus, Spray Management System, Compact and Versatile

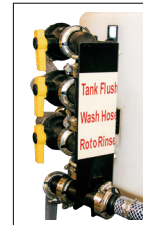


The Pattison Inductor Plus, spray management system has been designed with today's operators in mind. This neat compact design will take up less space on the spray trailer. The 3" plumbing design integrated with the high capacity venturi, will have the sprayer filled and back in the field fast. The batch tank empties and rinses jug containers ensuring no residue is left behind. The optional bulk metering system will use the high capacity venturi to draw product directly from bulk containers. Clearly labelled valves makes for ease of operation.

.Dimensions -
32"W x 48"L x 39"H,
Weight 110 lbs.



Tank Knife Assembly -with tank flush and rinse nozzles



Clearly marked valves for ease of operation.

Shown with optional metering system




With a turn of a single handle, activates the venturi to pull product directly from the bulk containers. The venturi will move product in excess of 100 lts/min. ensuring product is on board well before your sprayer is filled. The Raven Flomax 221 is accurate to within + - 1%, and measures product in litres or US gallons.

DESCRIPTION	PART #
Inductor Plus Spray Management System	PPPLUS
Optional Meter	RA10630173653

Dry-Inductor

FEATURES:

- Pre-assembled as shown
- 30 USG cone bottom tank, completely empties
- Hinged lid on tank
- No interior bulkhead for dry product to get hung up on
- High capacity induction venturi
- Dry product inducted directly into liquid stream
- Designed to be used with 
- Assembled with leak proof manifold fittings
- 3" plumbing, capable of flows up to 450 USG/Min.
- Approx. 44" wide x 42" high

DESCRIPTION	PART #
Dry-Induction System	BADRYIN300



Polypropylene Inductors

DESCRIPTION	Parts #
2" Manifold Poly inductor 1 1/2"	BAMHV200
2" Full port manifold inductor	BAMHV220A

1-866-509-0715

 **Pattison**
Expect the Best!

www.liquidsystems.net