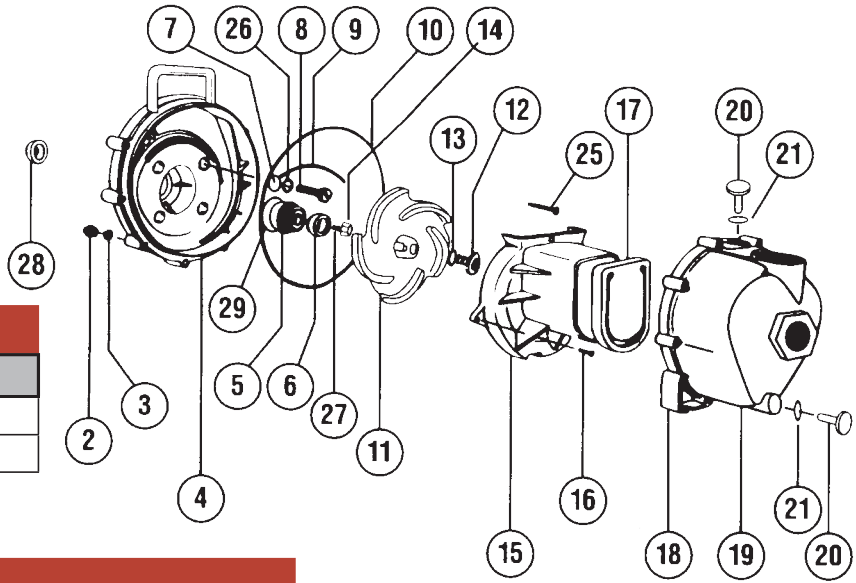




# Liquid Fertilizer Pumps

\* Helpful tip - Use a 7/16 course tread bolt to remove impeller)



## Replacements Pumps Only

DESCRIPTION	PART #
2" Manifold style Pump only	BAM225PO
3" Manifold Style Pump only	BAM300PO

## Banjo Polypropylene Pump Parts

ITEM	DESCRIPTION	Qty.	Pump Size and Type			
			1 1/2"	2" New Style	2" Old Style	3"
2	Body Nuts SS	10	BAV07019	BAV07019	BAV07019	BAV07019
3	Lock washer SS	10	BAV07018	BAV07018	BAV07018	BAV07018
4	Rear bracket	1	BA12703A	BA12703A	BA12703A	BA12703A
5 & 6	Shaft seal assembly SS FKM (Viton) shaft seal assembly SS	1	BA12713 BA12713V	BA12713 BA12713V	BA12713 BA12713V	BA12713 BA12713V
7	Screw heads O-rings Screw heads O-rings	4 4	BA12717 BA12717V	BA12717 BA12717V	BA12717 BA12717V	BA12717 BA12717V
8	Rear bracket screws SS	4	BA12715A	BA12715A	BA12715A	BA12715A
9	O-ring segment FKM (Viton) O-ring segment	1 1	BA12754 BA12754V	BA12754 BA12754A	BA12754 BA12754A	BA12754 BA12754A
10	Body O-ring FKM (Viton) body O-ring	1 1	BA12719A BA12719V	BA12719A BA12719AV	BA12719A BA12719AV	BA12719A BA12719AV
11	3 vane impeller 5 vane impeller 3 vane impeller - Old style 4 vane impeller	1 1 1 1	BA12771A	BA12772	BA12771	BA13772
12	Impeller bolt SS	1	BA12765A	BA12765A	BA12765A	BA12765A
13	Impeller bolt gasket	1	BA12774VA	BA12774VA	BA12774VA	BA12774VA
14	Impeller hex nut	1	BA12775A	BA12775A	BA12775A	BA12775A
15	Volute Volute - old style	1 1	BA12702A	BA12702A	BA12702	BA13702
16	Volute screw SS	1	BA12725	BA12725	BA12725	BA12725
17	Check valve FKM (Viton) check valve	1 1	BA12705 BA12705V	BA12705 BA12705V	BA12705 BA12705V	BA12705 BA12705V
18	Pump body	1	BA12711A	BA12712A	BA12712A	BA13712
19	Body screw/washer SS	10	BA12720	BA12720	BA12720	BA12720
20	Prime/drain plug	2	BA12777	BA12777	BA12777	BA13777
21	Prime/drain O-ring	2	BA12722	BA12722	BA12722	BA13778
25	Upper volute screws	1	BA12900	BA12900	BA12900	BA12900
26	Rear bracket washer SS	4	BA12901	BA12901	BA12901	BA12901
27	Impeller key SS	1	BA12902A	BA12902A	BA12902A	BA12902A
28	Shaft slinger	1	BA12706	BA12706	BA12706	BA12706
29	O-ring for seal assembly	1	BA12710	BA12710	BA12710	BA12710